

MIPOLAM ELEGANCE

gerflor.com

FLOORING AND SHOWER SYSTEM



NEW

Gerflor[®]
theflooringgroup






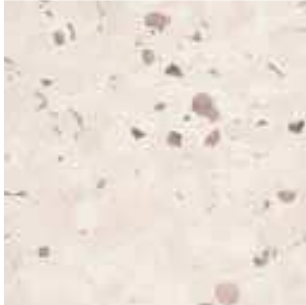
MIPOLAM ELEGANCE



34-43

Evercare™

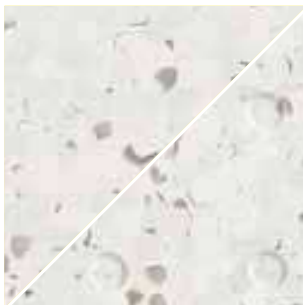
 100% recyclable



0347 Mangoustan

WR: 0585 0498

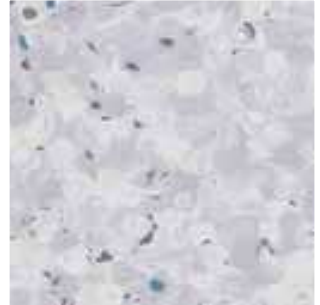
NCS: 1005-Y60R / LRV: 67,9



0705 Patisson

WR: 0585 0603

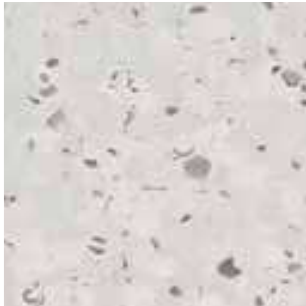
NCS: 1502-Y / LRV: 64,4



0318 Grape

WR: 0585 0304

NCS: 2005-R80B / LRV: 51,4



0696 Ginger

WR: 0585 0200

NCS: 1502-B / LRV: 59,7



0343 Pecan

WR: 0585 0026

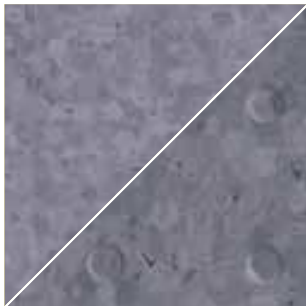
NCS: 2500-N / LRV: 46,9



0697 Greenstone

WR: 0585 2331

NCS: 3005-R80B / LRV: 37,1



0704 Raspberry Grey

WR: 0585 2456

NCS: 5005-R80B / LRV: 20,3



0344 Nutmeg

WR: 0585 2455

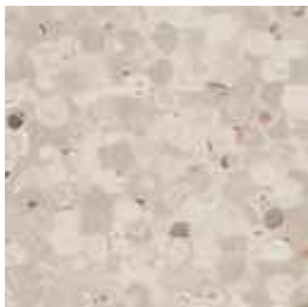
NCS: 7000-N / LRV: 11,8



0321 Olive

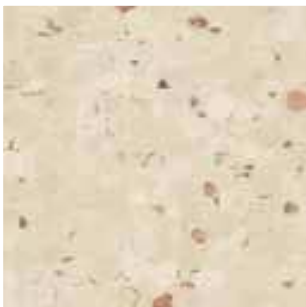
WR: 0585 0910

NCS: 8502-B / LRV: 6,9



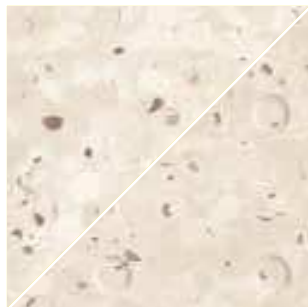
0323 Nut

WR: 0585 0001
NCS: 2005-Y20R / LRV: 50,6



0328 Almond

WR: 0585 2416
NCS: 1505-Y30R / LRV: 61,0



0322 Jicama

WR: 0585 0153
NCS: 1505-Y20R / LRV: 67,8



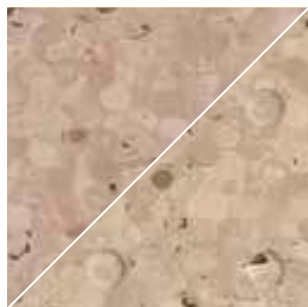
0324 Chestnut

WR: 0585 2174
NCS: 3005-Y20R / LRV: 37,2



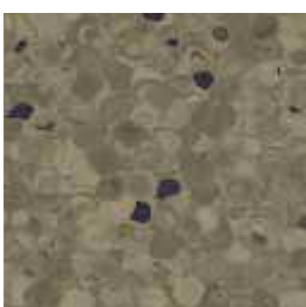
0327 Pear

WR: 0585 0674
NCS: 1015-Y30R / LRV: 55,0



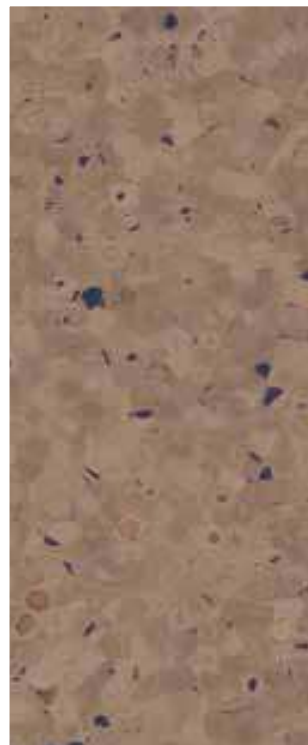
0329 Hazelnut

WR: 0585 2144
NCS: 3010-Y40R / LRV: 36,4



0326 Jojoba

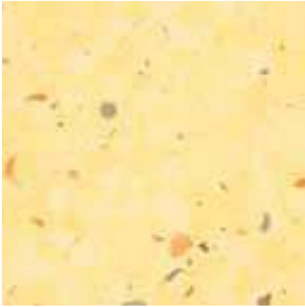
WR: 0585 2443
NCS: 5020-G70Y / LRV: 18,9



0698 Cacao

WR: 0585 2442
NCS: 6010-Y30R / LRV: 17,7

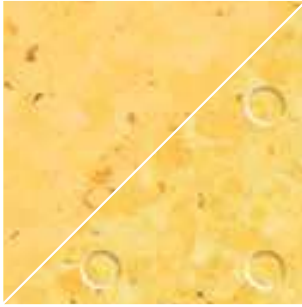




0699 Banana

WR: 0585 2446

NCS: 0520-Y20R / LRV: 64,3



0333 Ananas

WR: 0585 0460

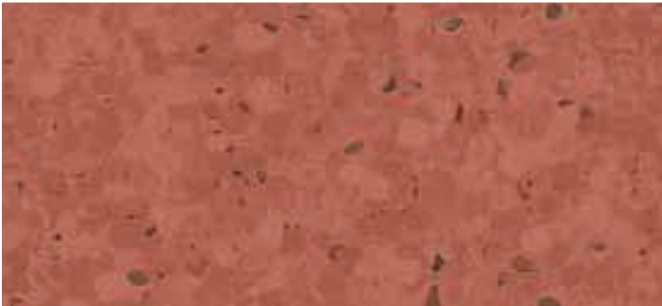
NCS: 0550-Y10R / LRV: 57,9



0700 Melon

WR: 0585 2448

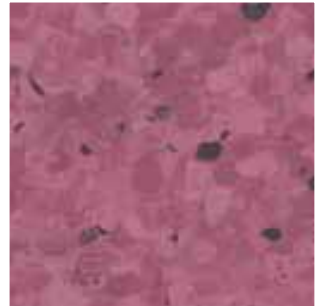
NCS: 1040-Y30R / LRV: 48,2



0330 Litchi

WR: 0585 2444

NCS: 4030-Y80R / LRV: 17,5



0331 Plum

WR: 0585 2445

NCS: 4040-R10B / LRV: 15,0



0702 Kumquat

WR: 0585 2449

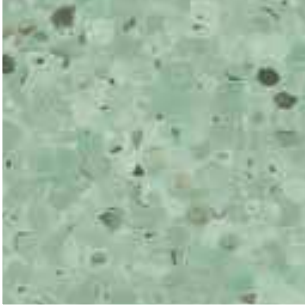
NCS: 3060-Y60R / LRV: 19,8



0336 Acerola

WR: 0585 2241

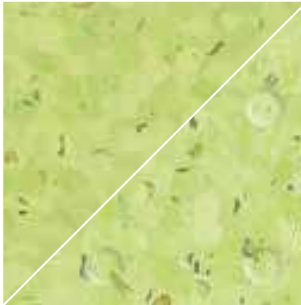
NCS: 2570-Y80R / LRV: 12,6



0339 Apple

WR: 0585 2451

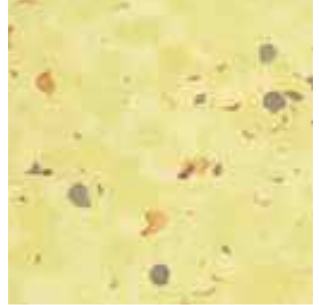
NCS: 2020-G10Y / LRV: 40,6



0338 Kiwi

WR: 0585 2386

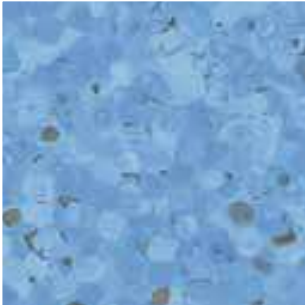
NCS: 1040-G50Y / LRV: 47,9



0703 Lime

WR: 0585 2450

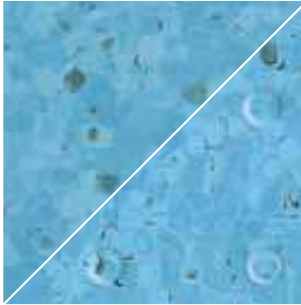
NCS: 1030-G90Y / LRV: 58,5



0348 Bluetta

WR: 0585 0236

NCS: 2040-R90B / LRV: 34



0341 Bilberry

WR: 0585 2453

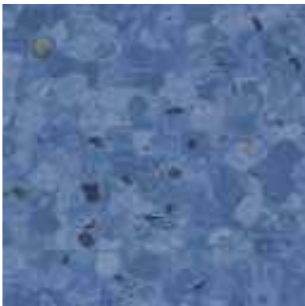
NCS: 2040-B10G / LRV: 34,8



0340 Jambolan

WR: 0585 2452

NCS: 1030-B30G / LRV: 45,6



0349 Bluecrop

WR: 0585 0802

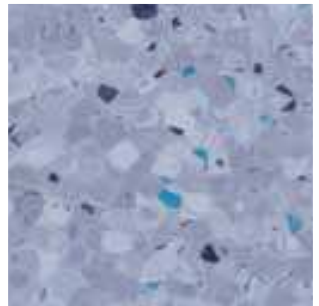
NCS: 4030-R80B / LRV: 17,8



0342 Blueberry

WR: 0585 2454

NCS: 2050-B / LRV: 25,8



0319 Quetsche

WR: 0585 2441

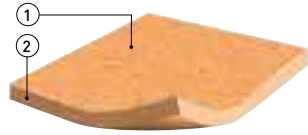
NCS: 3020-R80B / LRV: 31,0



MIPOLAM ELEGANCE

A large choice of 33 colours equipped with a revolutionary surface treatment

- ▶ High performance homogeneous flooring suitable for heavy duty traffic, available in sheet format.
- ▶ **Group T** wear rating compliant (very high resistance to traffic).
- ▶ Innovative true non-directional design, available in 33 contemporary colours.
- ▶ Elegant design with transparent particules (100 % PVC) for 3D effect and modern matt finish.
- ▶ Evercare™ surface treatment: No wax for life.
- ▶ Bacteriostatic and fungistatic for better hygiene.
- ▶ 100% recyclable.



- 1 evercare™ surface treatment
- 2 2 mm pressed monolayer



evercare™ TECHNOLOGY

Patented Gerflor Technology

- ▶ Obtained by UV laser cross-linking

High Performance

- ▶ Durability & Resistance

Easy maintenance

- ▶ No wax for life

Low Environmental Impact

- ▶ Saves water and detergent

GERFLOR TREATED



Extreme stain resistance (Eosin test)



INSTALLATION

Laying is the responsibility of the installer. Installation should be made in accordance with installation guidelines supplied and regularly updated by Gerflor's Technical Department. Installation should be carried out in accordance with local standards. Subfloor to be smooth, hard, clean and dry prior to laying. Where applicable the subfloor must incorporate an effective Damp Proof Membrane. The material must be allowed to acclimatise 24 hours prior to installation in a room temperature of between 18-24°C. All seams must be heat welded using Gerflor matching weld rod.

MAINTENANCE

Maintenance should be carried out regularly to retain the appearance and durability of the floor. The floor covering should be maintained with regular sweeping and damp mopping using a neutral cleaner, or auto scrubber machine with an appropriate pad.

⚠ Rubber leaves indelible stains on vinyl floorings: do not use mats with rubber backing and replace tubular furniture feet with those made of PVC or polyamide. Place mats of sufficient length at entrances to reduce outside sources of dirt.

Further installation and maintenance instructions are available from Gerflor.

SPECIAL SHOWER ELEGANCE SD

The bathroom is coordinated to the room with 8 anti-slip references complying with bare foot standard



0705 Patisson



0322 Jicama



0329 Hazelnut



0704 Raspberry Grey



0700 Melon



0333 Ananas



0338 Kiwi



0341 Bilberry



Special shower Elegance SD consists of a 2.4 mm (on grain side) monolayer sheet with the design through the whole thickness and a specific embossing for use with bare foot (DIN 51 097 - Class AB).



Shower threshold: Connection SD floor with a 2 mm floor.

MIPOLAM ELEGANCE

DESCRIPTION / BESCHREIBUNG / DESCRIPTION / BESCHRIJVING / DESCRIPCIÓN / DESCRIÇÃO / DESCRIZIONE

Total thickness / <i>Gesamtdicke</i> / Epaisseur totale / <i>Totale dikte</i> / Espesor total / <i>Esspura total</i> / Spessore totale	EN 428 mm	2.00
	ASTM F386-02 inch	0.08
Weight / <i>Flächengewicht</i> / Poids / <i>Gewicht</i> / Peso / <i>Peso</i> / Peso	EN 430 g/m ²	2850
Width/length of sheet / <i>Bahnenbreite/länge</i> / Largeur/longueur des lés / <i>Rolbreedte/Rollenlengte</i> / Ancho/largo de rollos / <i>Largura/comprimento dos rollos</i> / Larghezza/lunghezza dei teli	EN 426 cm/lm	200/20
	- feet - inch	6'6" / 66"
	- m ²	40
Coverage / roll	- sq.ft	430.56

CLASSIFICATION / KLASSIFIZIERUNG / CLASSIFICATION / CLASSIFICATIE / CLASIFICACIONES / CLASSIFICAÇÕES / CLASSIFICAZIONI

Norm/product specification / <i>Produkt Norm</i> / Norme produit / <i>Technische eigenschappen</i> / Normas / <i>Normas</i> / Norma prodotto	-	EN 649
European classification / <i>Europäische Klassifizierung</i> / Classement européen / <i>Europese classificatie</i> / Europea / <i>Europea</i> / Europea	ASTM F 1913-04	compliant
K rating / <i>Beanspruchungsklasse</i> / Classement K / <i>K classificatie</i> / Clasificación K / <i>Classificação K</i> / Classificazione K	EN 685 class	34-43
	- class	K5
Fire rating / <i>Brandverhalten</i> / Classement feu / <i>Brand classificatie</i> / Fuego / <i>Fogo</i> / Reazione al fuoco	EN 13501-1 class	Bit - s1
	ASTM E648-08 class	Class 1
	CAN/ULC 102.2	Tested in accordance

Static electrical propensity / <i>Begehauladung</i> / Potentiel de charge / <i>Elektrische eigenschappen</i> / Comportamiento electrostático / <i>Comportamento electrostático</i> / Resistenza elettrica	EN 1815 kV	< 2
---	------------	-----

PERFORMANCE / TECHNISCHE EIGENSCHAFTEN / PERFORMANCES / TESTRESULTAAT / CUALIDADES TÉCNICAS / PERFORMANCES / CARATTERISTICHE TECNICHE

Wear resistance / <i>Verschleißverhalten</i> / Résistance à l'usure / <i>Slijtvastheid</i> / Abrasión / <i>Abrasão</i> / Resistenza all'abrasione	EN 660.2 mm ³	≤ 2.0
Wear group / <i>Verschleißgruppe</i> / Groupe d'abrasion / <i>Groep slijtvastheid</i> / Grupo de abrasión / <i>Grupo de abrasão</i> / Gruppo di abrasione	EN 649 group	T
Type binder content / <i>Bindenmittelgehalt</i> / Teneur en agent liant	ISO 10581 Type	I
Dimensional stability / <i>Maßstabilität</i> / Stabilité dimensionnelle / <i>Maatvastheid</i> / Estabilidad dimensional / <i>Estabilidade dimensional</i> / Stabilità dimensionale	EN 434 %	≤ 0.40
Residual indentation / <i>Resteindruck</i> / Poinçonnement statique rémanent / <i>Indrukbelasting</i> / Punzonamento / <i>Puncoamento</i> / Impronta	EN 433 mm	≈ 0.03
Castor chair test / <i>Stuhrollenbeanspruchung</i> / Essai de la chaise à roulettes / <i>Rolweerstand bureaustoelen</i> / Determinación del efecto de una silla con ruedas / <i>Resistência a cadeiras de rodas</i> / Resistenza al passaggio di sedie con rotelle (Type W / Typ W)	EN 425 -	OK
Thermal conductivity / <i>Wärmeleitfähigkeit</i> / Conductivité thermique / <i>Thermische weerstand</i> / Resistencia térmica / <i>Resistência térmica</i> / Resistenza termica	EN 12 524 W/(m.K)	0.25
Colour fastness / <i>Lichtechtheit</i> / Solidité lumière / <i>Lichtechtheid</i> / Resistencia a la luz / <i>Estabilidade das cores</i> / Solidità alla luce	EN 20 105 B02 degree	≥ 6
Chemical resistance / <i>Verhalten gegenüber Chemikalien</i> / Résistance aux produits chimiques / <i>Chemische bestendigheid</i> / Resistencia a los productos químicos / <i>Resistência aos produtos químicos</i> / Resistenza ai prodotti chimici	EN 423 class	OK
Fungistatic and bacteriostatic treatment / <i>Fungistatisch e bakteriostaticisch</i> / Fongistatique et bactériostatique / <i>Bacteriologisch en schimmelwerend</i> / Bacteriostático y fungistático / <i>Bacterioslático e fungislático</i> / Batteriostatico e micostatico	-	OK
Surface treatment / <i>Oberflächenvergütung</i> / Traitement de surface / <i>Oppervlaktebehandeling</i> / Tratamiento de superficie / <i>Tratamento de superfície</i> / Trattamento di superficie	-	Evercare™
TVOC after 28 days / <i>TVOC (28 Tage)</i> / TVOC (28 jours) / <i>TVOC (28 dagen)</i> / TVOC (28 dias) / <i>TVOC (28 dias)</i> / TVOC (28 giorni)	ISO 16000-6 μg/m ³	< 10

CE marking / CE Kennzeichnung / Marquage CE / EG-conformiteitsmerk / Marca de conformidad CE / Marca de conformidade CE / Marcatura CE di conformità

CE	EN 14041	
	-	



Environmental Profiles Scheme
Certificate Number ENP 339
BRE 'A' Rated Green Guide Product

Gerflor Don't forget our complementary ranges!



and Be CONNECTED!



Committed to sustainable development

Gerflor®

theflooringgroup